



[www.thinkoutside.com](http://www.thinkoutside.com)

# Stowaway<sup>®</sup> Infrared Wireless Keyboard Owner's Manual for Windows Mobile 2003 (pocket PC 2003 & Pocket PC 2002 Handheld Devices

## Includes:

Asus MyPal A620  
Asus MyPal A700 Series Devices  
Audiovox VX 6600  
Dell Axim x3 Series Devices  
Dell Axim x5 Series Devices  
Fujitsu-Siemens Pocket Loox  
i-Mate PDA2K, Jam & XDA II  
iPAQ 1900 Series Devices  
iPAQ 2200 Series Devices  
iPAQ 3800 Series Devices  
iPAQ 3900 Series Devices  
iPAQ 4100 Series Devices  
iPAQ 4300 Series Devices  
iPAQ 5100 Series Devices  
iPAQ 5400 Series Devices  
iPAQ 5500 Series Devices

iPAQ 6300 Series Devices  
iPAQ HX Series Devices  
iPAQ RX Series Devices  
iPAQ RZ Series Devices  
O<sub>2</sub> XDA I & XDA II  
Orange SPV M1000  
Qtek 2020  
Samsung i700  
T-Mobile MDA I & MDA II  
Toshiba e300 Series Devices  
Toshiba e400 Series Devices  
Toshiba e500 Series Devices  
Toshiba e700 Series Devices  
Toshiba e800 Series Devices  
XDA/MDA (PW10/PH10) Series  
Devices

## Keyboard Driver:

Stowaway 4.2T

## Congratulations!

You have purchased the definitive tool to extend the capabilities of your handheld computer. The Stowaway IR Wireless Keyboard will provide you an easy and convenient way to add data to your Palm handheld device.

The Stowaway IR Wireless Keyboard is the most convenient portable solution to typing text and commands quickly and easily into your Palm OS handheld computer. This compact, yet full-sized keyboard lets you:

- Type email, meeting minutes, and classroom notes
- Quickly access applications like Calendar, Contacts, Notes and Tasks
- Type text and special characters
- Access on-screen buttons and menu items
- And much more!

This User Guide will help you get the most out of your Stowaway IR Wireless Keyboard.

# Table of Contents

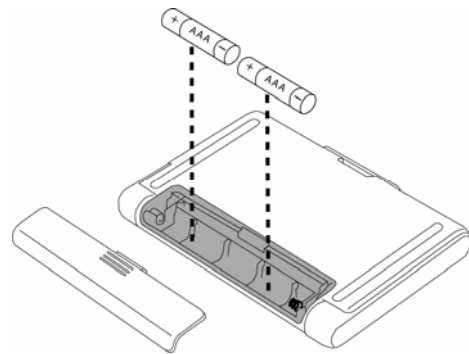
<b>Setting up the Keyboard</b> .....	4
Before you Begin .....	4
Installing the Software .....	4
<b>Setting Up the Stowaway IR Wireless Keyboard</b> .....	5
Opening the Keyboard .....	5
<b>Configuring the Keyboard</b> .....	6
Customizing Your Keyboard Options .....	8
Keyboard Control Panel .....	8
Input Method Toolbar .....	9
<b>Using the Stowaway IR Wireless Keyboard</b> .....	10
Moving the Cursor/Highlighting Text .....	10
On-Screen Button and Editing Shortcuts .....	11
Launching and Navigating Applications .....	11
Menu and Toolbar Navigation .....	12
Other Shortcuts .....	12
International and Extended Character Set .....	13
<b>Frequently Asked Questions and Answers</b> .....	15
<b>Legal Notices</b> .....	17
Trademarks .....	17
Warranty .....	17
Obtaining Warranty Service .....	18
Registering Your Product .....	18
Important Battery Information .....	19
Comfortable Typing .....	19
FCC Statement .....	20
Canadian ICES-003 Statement .....	21
CE Compliance Statement .....	21
<b>Features and Technical Specifications Summary</b> .....	22

# Setting up the Keyboard

## Before you Begin

Before you install the Stowaway IR Wireless Keyboard software for Windows Mobile 2003/Pocket PC 2002:

- **Disable or remove any other keyboard applications that you have previously installed on your Pocket PC device.** (Refer to the User Guide included with your Pocket PC for instructions on how to do this.)
- Ensure there is at least 250 KB of memory on your Pocket PC device. To check the available memory, tap 'Start' then 'Settings' then the 'System' tab and then 'Memory' icon.
- Insert the 2 AAA batteries (included) beneath the battery cover of the Stowaway IR Wireless Keyboard.



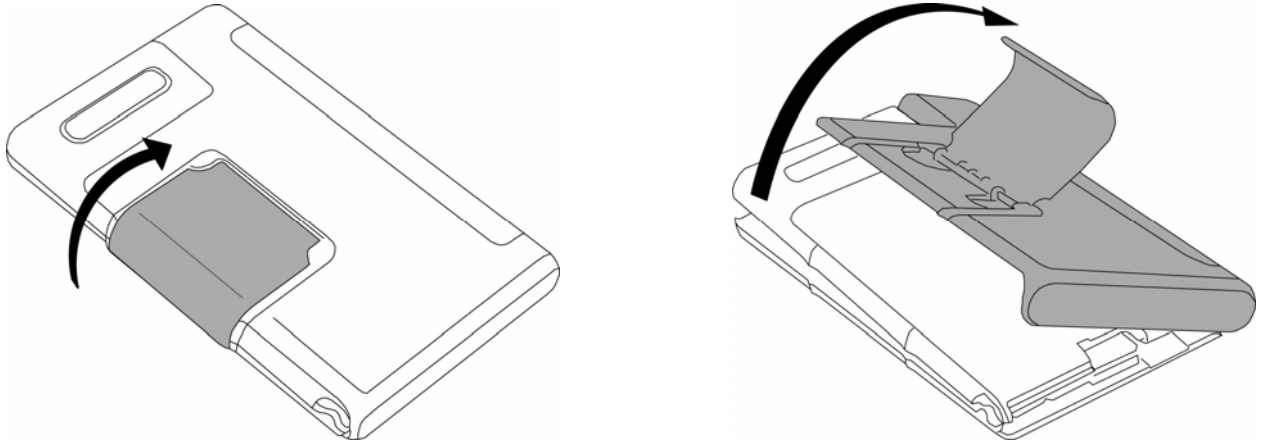
## Installing the Software

1. Connect your Pocket PC device to a computer using the docking cradle or sync cable.
2. Establish a connection between the computer and your Pocket PC device using ActiveSync<sup>®</sup> and then backup the data stored on the Pocket PC device.
3. Insert the CD-ROM into the CD-ROM drive on your PC.
4. Double-click the language preferred to start the installation process. Follow the on-screen instructions to successfully install the software.
5. Tap the on-screen button to reset your Pocket PC device to complete the installation.
6. After the driver is successfully installed and the Pocket PC device is reset, the keyboard driver icon will appear in the **Programs** window.

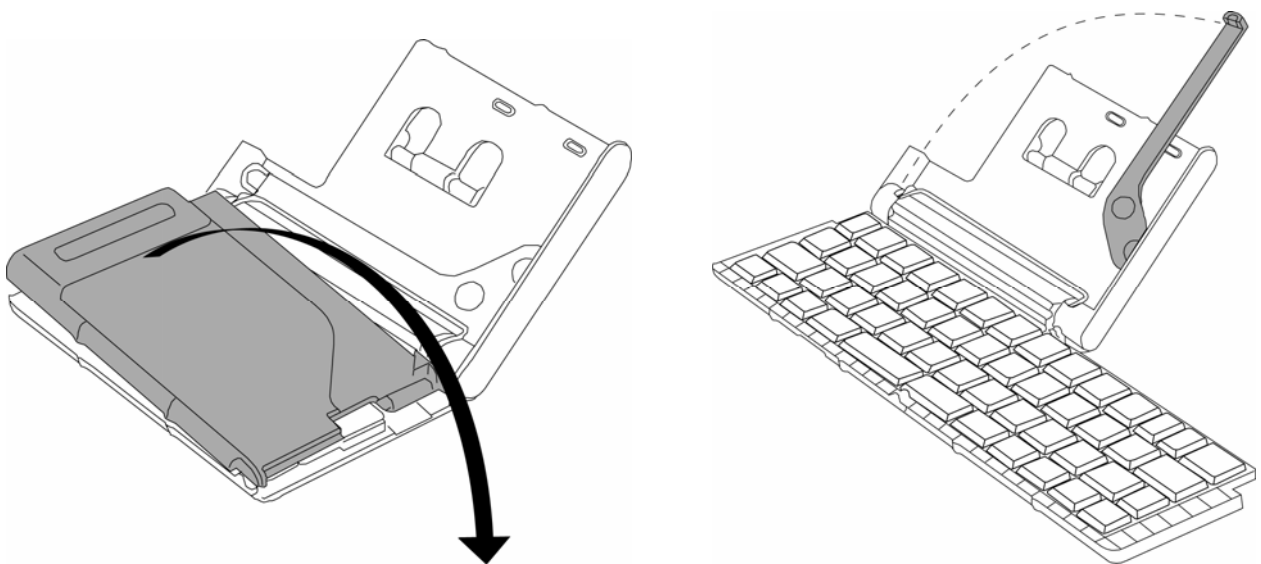
# Setting Up the Stowaway IR Wireless Keyboard

## Opening the Keyboard

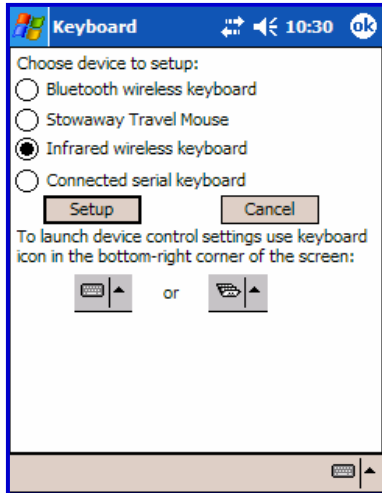
- Open the keyboard case by lifting the release handle and folding it back, using it as a stand.



- Unfold the keyboard platform on a firm, flat surface and rotate the infrared wand to align with your device's infrared port.

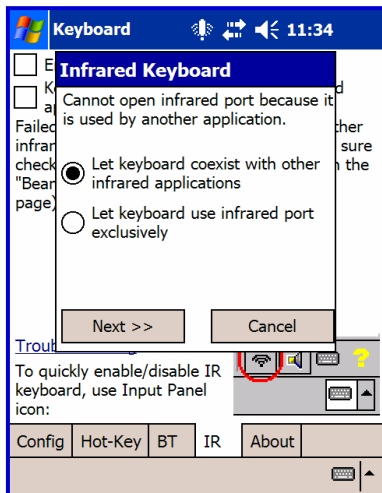
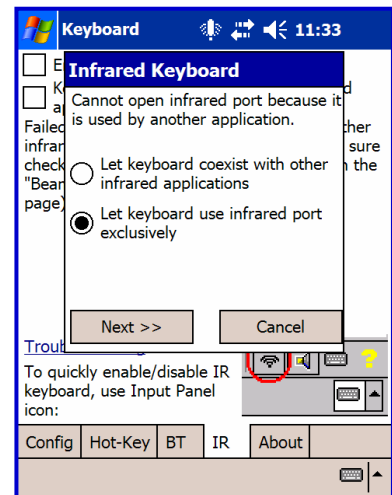


# Configuring the Keyboard



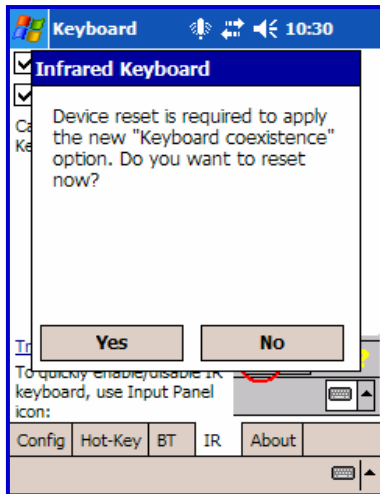
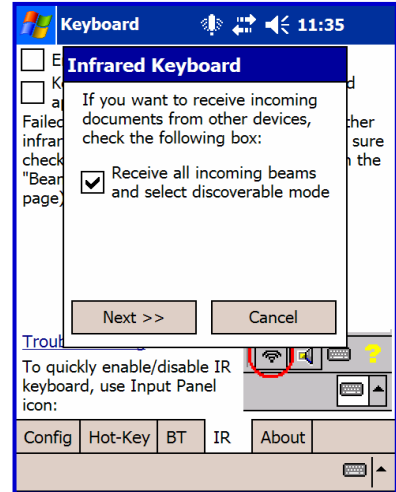
1. To enable the Stowaway IR Wireless Keyboard, select the “Infrared wireless keyboard” on-screen option on your Pocket PC and then tap **Setup**.

2. After tapping Setup, you may see the following:



3. Select “Let keyboard coexist with other infrared applications” then tap “Next”.


4. Select or deselect the **Receive all incoming beams and select discoverable mode** and then tap **Next**. When checked, this option lets you receive beamed files, programs, etc. while the keyboard is enabled.



5. Reset your Pocket PC device by tapping **Yes**.

**NOTE:** If you experience difficulties with other applications or beaming difficulties with other applications while using the "Keyboard coexistence" option, refer to the Frequently Asked Questions and Answers section of this User Guide for instructions to select the "Keyboard exclusive" option instead.

## Customizing Your Keyboard Options

Once you have installed the keyboard software on your handheld, you can customize your options. A keyboard icon  will now appear in the lower right corner of your handheld computer screen while using Calendar, Contacts, or other applications.

- Tap the keyboard icon once to display the keyboard input panel.
- Tap the keyboard icon on the keyboard input panel to display the keyboard control panel.

**NOTE:** Tapping the keyboard icon from the Today screen once first displays the keyboard control panel. Tapping the same keyboard icon twice displays the keyboard input panel.

### Keyboard Control Panel

On the **Config** tab:

- Tap **Enable** to select a keyboard type (choose IR Keyboard) and turn on access to the Infrared Wireless Keyboard. Tap **Disable** to turn off access to the Infrared Wireless Keyboard.
- To see a visual indication if the keyboard is in Capslock or Numlock mode, check or uncheck the **Show Capslock/Numlock notification** option.
- To select whether or not the keyboard icon will appear in the lower right corner of the Today screen, check or uncheck the **Show Icon on Today screen** option.
- To **increase** key repeat speed, drag the **Key Repeat Rate** slider to the **left**.
- To **decrease** key repeat speed, drag the **Key Repeat Rate** slider to the **right**.
- To **increase** key repeat delay, drag the **Key Repeat Delay** slider to the **right**.
- To **decrease** key repeat delay, drag the **Key Repeat Delay** slider to the **left**.

On the **Hot-Key** tab:

- Tap the down-arrow next to a number and select the application to associate with that number. When you press the <Alt> <L**Fn**> number key combination, for example <Alt> <L**Fn**> <4>, the selected application will launch. You can assign up to 10 applications in this manner. There are 2 Fn keys on the Stowaway IR Wireless Keyboard. The **blue Fn** key is to the left of the spacebar and is referred to as **L**Fn****. The **green Fn** key is to the right of the spacebar and is referred to as **R**Fn****.

On the **IR** tab:

- To disable or enable access to the Stowaway IR Wireless Keyboard, check or uncheck **Enable Infrared Keyboard**.
- To disable or enable Infrared beaming of documents, files, and applications while using the Stowaway IR Wireless Keyboard, check or uncheck **Keyboard coexistence with other infrared applications**.

On the **About** tab:

- The About tab indicates the keyboard software version installed on your Pocket PC device.

## Input Method Toolbar

There are 4 icons that appear in the keyboard input panel.



- Tap the beaming icon to quickly enable or disable the keyboard.



- Tap the speaker icon to turn the keyboard clicking sounds on or off.



- Tap the keyboard icon to access the keyboard control panel. This second keyboard icon appears above the keyboard icon that is visible in the lower right corner of the screen.



- Tap the help icon to access keyboard help topics and troubleshooting tips.

## Using the Stowaway IR Wireless Keyboard

- Commands joined by a dash “–” mean that the key combination must be pressed in order and with all keys held down at the same time.
- Commands joined by a plus “+” mean that the key following the “+” must be pressed after the initial key combination is pressed and released.
- The keyboard provides 2 separate color-coded function keys (*blue* <Fn> and *green* <Fn>) that enable you to navigate the device or access numbers and symbols. In the tables below, the *blue* <Fn> key is to the left of the spacebar and is referred to as <LFn>. The *green* <Fn> key is to the right of the spacebar and is referred to as <RFn>.

### Moving the Cursor/Highlighting Text

You can easily navigate, position the cursor, and select text for subsequent editing functions with these key combinations:

Action	Shortcut
The cursor moves left (back) one word	<Ctrl>–<⇐>
The cursor moves right (forward) one word	<Ctrl>–<⇒>
Select (highlight) next character to the left	<LFn>–<⇐>
Select (highlight) next character to the right	<LFn>–<⇒>
Select (highlight) previous line	<LFn>–<↑>
Select (highlight) next line	<LFn>–<↓>
Select (highlight) the next word to the left	<Ctrl>–<LFn>–<⇐>
Select (highlight) the next word to the right	<Ctrl>–<LFn>–<⇒>
Select (highlight) the previous paragraph	<Ctrl>–<LFn>–<↑>
Select (highlight) the next paragraph	<Ctrl>–<LFn>–<↓>
Beginning of the line	<RFn>–<⇐>
End of the line	<RFn>–<⇒>
Page up one page at a time	<RFn>–<↑>
Page down one page at a time	<RFn>–<↓>
The cursor moves to the beginning of the document	<Ctrl>–<RFn>–<⇐>
The cursor moves to the end of the document	<Ctrl>–<RFn>–<⇒>
The cursor moves to the top of the page	<Ctrl>–<RFn>–<↑>
The cursor moves to the bottom of the page	<Ctrl>–<RFn>–<↓>

## On-Screen Button and Editing Shortcuts

From the keyboard, you can activate on-screen buttons such as (OK) or (X) and access application editing functions. Refer to the following table for the appropriate keyboard shortcut.

On-Screen Button or Editing Function	Shortcut
OK	<Lfn>--<Enter>
Send (simulates a screen tap on <b>Send</b> )	<Lfn>--<.,>
Close a window or application	<Lfn>--<X>
Generate an ESC	<Lfn>--<Tab>
Turns on NumLock mode	<Lfn>--<CapsLock>
Turns on CapsLock mode	<CapsLock>
New item	<Ctrl>--<N> or <Lfn>--<N>
Cut selected text	<Ctrl>--<X>
Copy selected text	<Ctrl>--<C>
Paste cut or copied text	<Ctrl>--<V>
Undo last action	<Ctrl>--<Z>
Select all	<Ctrl>--<A>

## Launching and Navigating Applications

To launch software applications and navigate among them, refer to the following table:

Action	Shortcut
Access Programs screen	<Lfn>--<C>
Access Settings screen	<Lfn>--<V>
Launch Today screen	<Lfn>--<Z>
Launch Calendar	<Lfn>--<A>
Launch Contacts	<Lfn>--<S>
Launch Inbox	<Lfn>--<D>
Launch Tasks	<Lfn>--<F>
Launch Notes	<Lfn>--<J>
Launch Word	<Lfn>--<K>
Launch Excel	<Lfn>--<L>
Launch Internet Explorer	<Lfn>--<.;>
Launch up to 10 user selected applications (refer to "Hot-Key tab" section for more information)	<Alt>--<Lfn>--<number>
Toggle among open and recently used programs.	<Alt>--<Tab> (Hold the Alt key and hit the Tab key until the program you want is selected, then release keys to make it active)

## Menu and Toolbar Navigation

You can access program menus, submenus, and toolbars with the Stowaway BT keyboard using the following commands.

Action	Key command
<p>To activate a program's menu bar at the bottom of the Pocket PC device screen and select a main menu item use one of these two (2) methods:</p> <ol style="list-style-type: none"> <li>1. Press and release the &lt;Alt&gt; key, then use the arrow keys to scroll left and right until the main menu item you want is highlighted.</li> </ol> <p style="text-align: center;"><b>or</b></p> <ol style="list-style-type: none"> <li>2. Press and hold the &lt;Alt&gt; key, then press the letter key that corresponds to the first letter of the main menu item (e.g. to access the Tools menu in Word, hold the &lt;Alt&gt; key then press &lt;T&gt;).</li> </ol>	<p>&lt;Alt&gt;+&lt;⇐&gt; or &lt;Alt&gt;+&lt;⇒&gt;</p> <p>&lt;Alt&gt;–first letter of main menu item</p>
<p>To access a program's submenu, first select a main menu item and then navigate the submenu using the up and down arrow keys. Press the &lt;Enter&gt; key to choose the submenu item.</p>	<p>&lt;↑&gt; or &lt;↓&gt;</p> <p>&lt;Enter&gt;</p>
<p>To access a program's toolbar at the top of the Pocket PC device screen:</p> <ol style="list-style-type: none"> <li>1. Press and hold the &lt;Ctrl&gt; key and then press the &lt;Tab&gt; key.</li> <li>2. Use the left and right arrow keys to highlight the Tool bar item you want.</li> <li>3. Press &lt;Enter&gt; to select the highlighted tool bar item.</li> <li>4. Use the up and down arrow keys to highlight the submenu item you want.</li> <li>5. Press &lt;Enter&gt; to select the highlighted submenu item.</li> </ol>	<p>&lt;Ctrl&gt;–&lt;Tab&gt;</p> <p>&lt;⇐&gt; or &lt;⇒&gt;</p> <p>&lt;Enter&gt;</p> <p>&lt;↑&gt; or &lt;↓&gt;</p> <p>&lt;Enter&gt;</p>

## Other Shortcuts

Several shortcuts below provide you additional flexibility when using the Stowaway BT keyboard:

Action	Shortcut
Show/hide the Input Method Toolbar	<LFn>–<Left Spacebar>
Launch the Keyboard Control Panel	<LFn>–<Right Spacebar>
Turns off the Pocket PC device. <b>NOTE:</b> Pressing a keyboard key will not turn it back on.	<LFn>–<Backspace>


## International and Extended Character Set

Character	Description	Shortcut
Á, É, Í, Ó, Ú, Ý	Acute accent	<Ctrl>-<'>+<Shift>-<letter>
á, é, í, ó, ú, ý	Acute accent	<Ctrl>-<'>+<letter>
Â, Ê, Î, Ô, Û	Circumflex accent	<Ctrl>-<RFn>-<Y>+<Shift>-<letter>
â, ê, î, ô, û	Circumflex accent	<Ctrl>-<RFn>-<Y>+<letter>
Ä, Ë, Ì, Ö, Ù, Ý	Dieresis accent (umlaut)	<Ctrl>-<Shift>-<;>+<Shift>-<letter>
ä, ë, ì, ö, ù, ÿ	Dieresis accent (umlaut)	<Ctrl>-<Shift>-<;>+<letter>
À, È, Ì, Ò, Ù	Grave accent	<Ctrl>-<LFn>-<'>+<Shift>-<letter>
à, è, ì, ò, ù	Grave accent	<Ctrl>-<LFn>-<'>+<letter>
Ã, Õ, Ñ	Tilde accent	<Ctrl>-<RFn>-<'>+<Shift>-<letter>
ã, õ, ñ	Tilde accent	<Ctrl>-<RFn>-<'>+<letter>
Å	Dot accent	<Ctrl>-<RFn>-<W>+<Shift>-<A>
å	Dot accent	<Ctrl>-<RFn>-<W>+<A>
Ç	Cedilla	<Ctrl>-<, >+<Shift>-<C>
ç	Cedilla	<Ctrl>-<, >+<C>
Ø	Capital naught	<Ctrl>-</>+<Shift>-<O>
ø	Lower case naught	<Ctrl>-</>+<O>
Æ	Æ	<Ctrl>-<RFn>-<U>+<Shift>-<A>
æ	æ	<Ctrl>-<RFn>-<U>+<A>
Œ	Œ	<Ctrl>-<RFn>-<U>+<Shift>-<O>
œ	œ	<Ctrl>-<RFn>-<U>+<O>
ß	Beta	<Ctrl>-<RFn>-<U>+<S>
?	Question Mark	<Shift>-<↑>
¿	Inverted Question Mark	<Ctrl>-<Alt>-<Shift>-<↑>
!	Exclamation	<RFn>-<Q>
¡	Inverted Exclamation	<Ctrl>-<Alt>-<RFn>-<Q>
•	Bullet	<Ctrl>-<Alt>-<W>
°	Degree	<Ctrl>-<Alt>-<D>
μ	Micro	<Ctrl>-<Alt>-<U>
¶	Paragraph symbol	<Ctrl>-<Alt>-<LFn>-</>
§	Section	<Ctrl>-<Alt>-<S>
@	At sign	<RFn>-<W>
©	Copyright	<Ctrl>-<Alt>-<C>
™	Trademark	<Ctrl>-<Alt>-<T>
®	Registered trademark	<Ctrl>-<Alt>-<R>
£	Pound (British)	<Ctrl>-<Alt>-<P> or <RFn>-<;>
¥	Yen	<Ctrl>-<Alt>-<Y> or <RFn>-<. >
₣	Franc	<Ctrl>-<Alt>-<F>
₺	Lira	<Ctrl>-<Alt>-<L>
€	Euro	<Ctrl>-<Alt>-<E> or <RFn>-<, >
¢	Cents	<Ctrl>-</>+<C>
\$	Dollar sign	<RFn>-<R>

Character	Description	Shortcut
½	One-half	<Ctrl>--<Alt>--<LFn>--<W>
¾	Three-quarter	<Ctrl>--<Alt>--<LFn>--<E>
¼	One-quarter	<Ctrl>--<Alt>--<LFn>--<R>
±	Plus-Minus	<Ctrl>--<Alt>--<Shift>--<=>
÷	Division	<Ctrl>--<Alt>--<->
#	Number sign	<RFn>--<E>
%	Percent	<RFn>--<T>
^	Caret	<RFn>--<Y>
&	Ampersand	<RFn>--<U>
*	Asterisk	<RFn>--<I>
(	Left parenthesis	<RFn>--<O>
)	Right parenthesis	<RFn>--<P>
{	Left curly bracket	<RFn>--<->
}	Right curly bracket	<RFn>--<=>
~	Tilde	<RFn>--<'>
	Vertical bar	<RFn>--</>
\	Reverse solidus	<LFn>--</>
`	Grave	<LFn>--<'>
[	Left square bracket	<LFn>--<->
]	Right square bracket	<LFn>--<=>

# Frequently Asked Questions and Answers

## Q: What should I do when I type on the keyboard and nothing happens?

- Check that Pocket PC device's batteries are charged.
- Check the keyboard's two AAA batteries.
- Check to make sure that your Pocket PC device is properly connected to the keyboard by repositioning the IR wand to point at the IR port of your Pocket PC device.
- Check to make sure that the keyboard software is installed properly according to the instructions.
- Check the Config tab of the Keyboard Control Panel to make sure you've selected the appropriate keyboard type. After tapping "Enable", you should select "Infrared wireless keyboard".
- Check the IR tab of the Keyboard Control Panel to make sure the wireless keyboard is enabled.
- Use the Keyboard Troubleshooter  in the keyboard control panel.

## Q: Why can't I synchronize my handheld when using the keyboard?

The Stowaway IR Wireless Keyboard does not replace your handheld computer's cradle. To synchronize, connect your handheld to the synchronization cradle and then synchronize as usual. If your handheld computer uses a synchronization cable, you may be able to leave the cable connected while you type as long as it doesn't interfere with the keyboard easel and IR wand.

## Q: Can I use my Stowaway IR Wireless Keyboard with other handheld devices?

Yes. The Stowaway IR Wireless Keyboard, when combined with the appropriate Stowaway software drivers, is designed to work with handheld devices equipped with an IR port.

## Q: How do I uninstall the keyboard driver?

Select Start→Settings→System→Remove Programs. Select **Stowaway Keyboard Driver** from the list of applications then tap the Remove button.

## Q: What is the Serial tab of the Keyboard Control Panel for?

If you should ever select and setup the “Connected serial keyboard” option on the Config tab of the Keyboard Control Panel, you will see a Serial tab added to the Keyboard Control Panel. Even if you change back to “Infrared wireless keyboard” the Serial tab remains in the Keyboard Control Panel. Only users of Stowaway keyboards that use a physical connection to their Pocket PC device (vs. wireless connection) will use this tab. Users of the Stowaway IR Wireless Keyboard should not pay attention to this tab.

## Q: What should I do if I am having IR beaming difficulties when using the keyboard and other IR equipped devices?

In most cases, using the “Keyboard coexistence” option will allow you to use the keyboard and send/receive beamed files and applications without issue. If however, you experience beaming or application difficulties with this option selected, then select the “Keyboard exclusive” option.

To change this option:

1. Access the IR tab of the Keyboard Control Panel. (Fig. A)
2. Uncheck the “Keyboard coexistence with other infrared applications” box. (Fig. A)
3. Select “Yes” to reset your device and enable the new settings. (Fig. B)

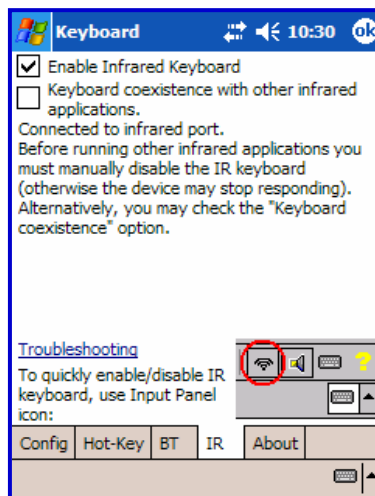


Fig. A

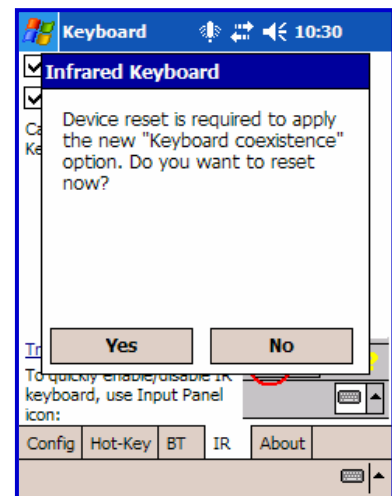


Fig. B

## Legal Notices

Think Outside shall not be liable for technical or editorial errors or omissions contained herein or for special, indirect, incidental or consequential damages whatsoever in connection with the furnishing, performance, or use of this material. The information in this document is provided "as is" without express or implied warranty of any kind, including, but not limited to, the implied warranties of merchantability and fitness for a particular purpose, and is subject to change without notice. The warranties for Think Outside products are set forth in the express limited warranty statements accompanying such products. Nothing herein should be construed as constituting an additional warranty. Think Outside assumes no responsibility for any loss or claims by third parties, which may arise through the use of this software. Think Outside does not warrant that the software will be error-free, nor that the software will run uninterrupted. Think Outside assumes no responsibility for any damage or loss caused by deletion of data as a result of malfunction, dead battery, or repairs. Be sure to make backup copies of all important data on other media to protect against data loss. Information in this document is subject to change without notice.

©2005 Think Outside, Inc. All rights reserved.

Reproduction of this document in any manner whatsoever without the written permission of Think Outside, Inc. is strictly forbidden.

## Trademarks

Think Outside and Stowaway are registered trademarks of Think Outside, Inc. ActiveSync, Windows Mobile, Windows and Outlook are registered trademarks of Microsoft Corporation in the United States and/or other countries. iPAQ is a registered trademark of Hewlett Packard Corporation in the United States and/or other countries. Other trademarks and trade names may be used in this document to refer to either the entities claiming the marks and names or their products. No proprietary interest in other trademarks and trade names is claimed.

## Warranty

Think Outside warrants this product against defects in materials and workmanship under normal use for a period of one year from the date of original retail purchase. Think Outside's and its suppliers' entire liability, and your exclusive remedy, if you discover a defect and return the product with proof of purchase to Think Outside during the warranty period, is that Think Outside will, at its option, repair, replace, or refund the purchase price of the product to you at no charge. This limited warranty is void if the defect

results from accident, alteration, abuse, improper use, or exposure to water or extreme temperature. TO THE MAXIMUM EXTENT PERMITTED BY LAW, THIS LIMITED WARRANTY IS EXCLUSIVE AND THINK OUTSIDE DISCLAIMS ALL OTHER WARRANTIES, EXPRESS OR IMPLIED, INCLUDING WARRANTIES OF MERCHANTABILITY, FITNESS FOR A PARTICULAR PURPOSE, TITLE AND NON-INFRINGEMENT. THINK OUTSIDE IS NOT RESPONSIBLE FOR SPECIAL, INCIDENTAL, INDIRECT OR CONSEQUENTIAL DAMAGES (INCLUDING WITHOUT LIMITATION, DAMAGES FOR LOST PROFITS, LOST SAVINGS, OR OTHER DAMAGES) ARISING OUT OF THE USE OR INABILITY TO USE THE PRODUCT OR THE BREACH OF ANY EXPRESS OR IMPLIED WARRANTY, EVEN IF THINK OUTSIDE HAS BEEN ADVISED OF THE POSSIBILITY OF THOSE DAMAGES. Because some jurisdictions do not permit the exclusion or limitations set forth above, they may not apply in all cases. This warranty is governed by the laws of the State of California.

### Obtaining Warranty Service

Customer must contact Think Outside within the applicable warranty period to obtain warranty service authorization. Dated proof of original purchase will be required for warranty service, repair, or replacement. Products or parts shipped by Customer to Think Outside must be sent postage-paid and packaged appropriately for safe shipment. Think Outside is not responsible for Customer products received without a warranty service authorization and may be rejected. Repaired or replacement products will be shipped to Customer at Think Outside's expense. All products or parts that are replaced become the property of Think Outside. The repair and replacement process for products or parts in locations outside of the United States will vary depending on Customer's location.

[Support@ThinkOutside.com](mailto:Support@ThinkOutside.com)

Think Outside  
85 Saratoga Ave.  
Suite 200  
Santa Clara, CA 95051  
USA  
[www.thinkoutside.com](http://www.thinkoutside.com)

### Registering Your Product

To register your Stowaway keyboard product, please visit [www.thinkoutside.com/registration](http://www.thinkoutside.com/registration) and complete the online form.

## Important Battery Information

- Keep batteries away from children.
- Do not mix batteries of different types or old and new batteries.
- Always replace old, weak or worn-out batteries promptly and recycle or dispose of them properly. Before inserting new batteries, the battery compartment should be cleaned. If fluid from the battery comes into contact with skin or clothes, flush with water immediately.
- Remove the batteries if the device will be inactive longer than a month.
- Do not open, puncture or otherwise damage the batteries.
- Do not use fire to dispose of batteries.

Released battery electrolyte is corrosive and can cause damage to the eyes and skin and may be toxic if swallowed.

## Comfortable Typing

Research suggests that physical discomfort and injury to nerves, tendons, and muscles may be related to repetitive motion, an improperly set up work area, incorrect body posture, and poor work habits.

To reduce the risk of injury, follow these precautions:

- Stand, stretch, and move around several times every hour.
- Every once in a while, work on a different task with your hands. Avoid repetitive motions. Use shortcut keys to move efficiently and avoid repetitive, awkward movement.
- Type gently and lightly.
- Relax your shoulders and keep your elbows at your sides. Adjust the keyboard so that you don't have to stretch to reach it.
- Adjust your position so that you don't have to bend your wrists to type; avoid placing your wrists on a sharp edge.

If you feel discomfort or numbness in your hands, wrists, arms, shoulders, neck or back while typing, get the advice of a qualified medical professional.

## FCC Statement

This device complies with Part 15 of the FCC rules. Operation is subject to the following two conditions: (1) this device may not cause harmful interference, and (2) this device must accept any interference received, including interference that may cause undesired operation.

**NOTE:** This equipment has been tested and found to comply with the limits for a Class B digital device, pursuant to Part 15 of the FCC rules. These limits are designed to provide reasonable protection against harmful interference in a residential installation. This equipment generates, uses, and can radiate radio frequency energy and, if not installed and used in accordance with the instructions, may cause harmful interference to radio communications. However, there is no guarantee that interference will not occur in a particular installation. If this equipment does cause harmful interference to radio or television reception, which can be determined by turning the equipment off and on, the user is encouraged to try to correct the interference by one or more of the following measures:

Reorient or relocate the receiving antenna.

Increase the separation between the equipment and receiver.

Connect the equipment into an outlet on a circuit different from that to which the receiver is connected.

Consult the dealer or an experienced radio/TV technician for help.

The use of shielded I/O cables is required when connecting this equipment to any and all optional peripheral or host devices. Failure to do so may violate FCC rules.

**CAUTION:** Changes or modifications not covered in this manual must be approved in writing by the manufacturer's Regulatory Engineering Department. Changes or modifications made without written approval may void the user's authority to operate this equipment.

### **Responsible Party:**

Think Outside, Inc.

85 Saratoga Ave

Santa Clara, CA 95051

United States of America

## Canadian ICES-003 Statement

This Class B digital apparatus meets all the requirements of the Canadian Interference-Causing Equipment Regulations.

Cet appareil numérique de la class B respecte toutes les exigences du Règlement sur le matériel brouilleur du Canada.



## CE Compliance Statement

This product was tested and found to comply with all the requirements of the EMC Directive 89 / 336 / EEC and LVD 73 / 23 / EEC as amended.

---

**IMPORTANT:** Please read the End User License Agreement for Keyboard Software that accompanies this product before using the accompanying software program. Using any part of the software implies that you accept the terms of the End User License Agreement for Keyboard Software.

---

## Features and Technical Specifications Summary

- Small, foldaway design makes it easy to put in your pocket or briefcase.
- Simple connection compatibility with your Palm™ device via IR port.
- Full size QWERTY keyboard layout for optimum comfort while typing. Meets ISO/IEC Specification 9995 for full-size keyboards.
- User programmable shortcut keys for faster access to applications.
- On-screen menu and toolbar navigation via keyboard
- Does not draw power from your handheld device.
- Rubber grip pads prevent keyboard slipping while typing.

Dimensions Open: 10.35" w × 2.60" h × 6.02" D (263 mm x 66 mm x 153 mm)

Dimensions Closed: 5.47" w × .75" h × 3.82"D (139 mm x 19 mm x 97 mm)

Weight (including batteries): 7.33 ounces (208 grams)

Operating Temperature Range: 0 to 50 degrees C

Typical Battery Life: 6 months estimated with normal usage